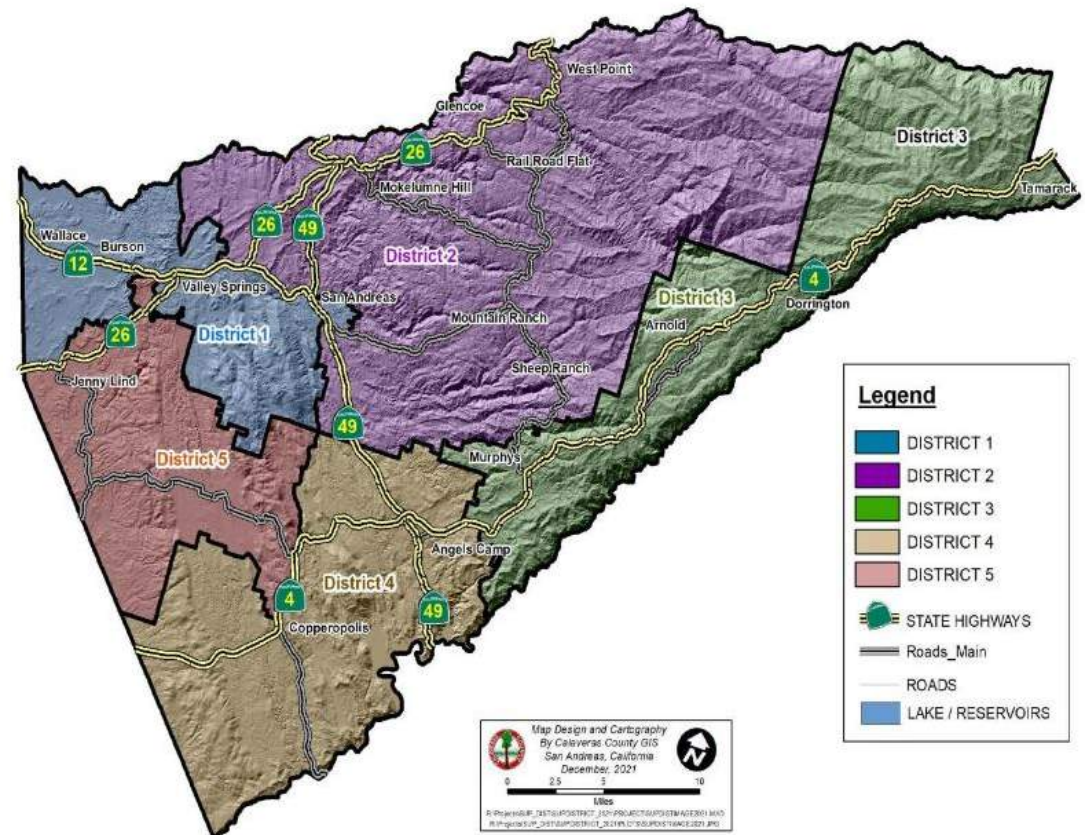


Calaveras County Parks & Recreation Master Plan

Parks and Recreation Commission Meeting
February 20, 2025

Meeting Agenda

1. Project Timeline
2. Key Points:
 - Community Feedback
 - Identified Needs
 - Financial Assessment
 - Recommendations
 - Implementation



Timeline



RESEARCH &
DATA
COLLECTION

SITE INVENTORY
AND ASSESSMENT

COMMUNITY
OUTREACH

MASTER PLAN
PREPARATION

PLAN REVIEW
AND FINAL
ADOPTION

NOV-DEC 2023

NOV-APRIL 2023

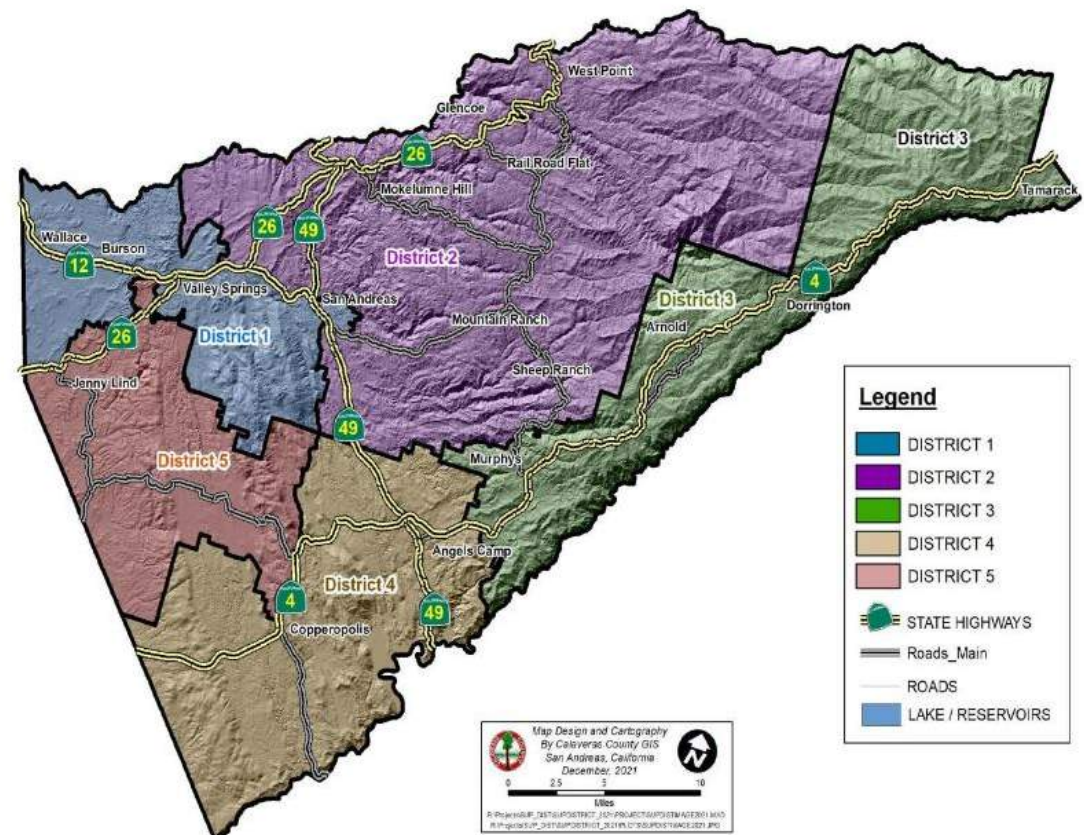
JAN-APRIL 2024

MAY-DEC 2024

JAN-FEB 2025

Master Plan Goals

- Consider unique character of each District within the County.
- Identify park and recreational needs and priorities through public input and analysis of current resources.
- Develop management best practices and design guidelines to inform future improvements or expansion.
- Provide recommendations for consideration by the County.



Research and Data Collection

What research?

- Context and Demographics
 - What is special about Calaveras County

- Current Trends & Best Practices
 - National Park and Recreation Association
 - Sports and Fitness Industry Association
 - California Parks and Recreation Society
 - And more....

- Analysis & Needs Assessment
 - Benchmark comparable communities



TABLE 2.5 BENCHMARK COMPARISON COUNTIES					
COUNTY NAME	POPULATION (2020 CENSUS)	% CHANGE FROM 2010 CENSUS	SIZE (SQ MI)	POPULATION PER SQUARE MILE	PARK MANAGEMENT ENTITY
CALAVERAS	45,292	-0.60%	1,020	44	Calaveras County; Parks and Recreation Commission as an advisory
AMADOR	40,474	6.30%	606	67	Amador County Recreation Agency (ACRA)
TUOLUMNE	55,620	0.50%	2,236	25	Tuolumne County Recreation Department
PLUMAS	19,790	-1.10%	2,554	8	Three Separate Parks Management Districts
MARIPOSA	17,131	-6.10%	1,451	12	Public Works, Parks and Recreation Division
LASSEN	32,730	-6.20%	4,558	7	County Public Works; co-manages one large park with the BLM
TAOS COUNTY, NM	34,489	4.70%	2,204	16	Parks and Recreation is managed by County Facilities Management
RAVALLI COUNTY, MT	44,174	7.10%	2,400	18	Ravalli County Park Board

Research and Data Collection

General Plan Policy

- Level of Service – Provide minimum of 3 acres per 1000 residents. **Goal Met!**
- Work with the Parks and Recreation Commission, community organizations and special districts to develop park and recreation facilities.
- Pursue partnerships with other entities that make the most of limited funding...

TABLE 4.1 EXISTING COUNTY-OWNED PARKS

PARK NAME	PARK TYPOLOGY	MANAGING AGENCY	DISTRICT NUMBER	ACREAGE
Alex Quiñones/San Andreas Community Park	Community Park	San Andreas Recreation and Park District (SARPD)	District 2	25.55
Friedberger Park	Pocket Park	San Andreas Recreation and Park District (SARPD)	District 1	0.05
Mountain Ranch Community Park	Community Park	Mountain Ranch Community Club	District 2	4.7
Murphy's Community Park	Community Park	Murphy's Community Club (MCC)	District 3	1.09
Nielsen Park	Pocket Park	San Andreas Recreation and Park District (SARPD)	District 1	0.65
Rail Road Flat - Community Center	Community Park	Blue Mountain Community Renewal Council (BMCRC)	District 2	2.85
TOTAL PARK ACRES				34.84



TABLE 4.5 CALAVERAS COUNTY LEVEL OF SERVICE STANDARDS AND GOALS

CURRENT LEVEL OF SERVICE					2030 LEVEL OF SERVICE GOALS	
LOS (Standard Acres Per 1,000 Residents)	Current LOS Ratio Per 1,000 County Residents	Park Acres (As Inventoried)	2020 Population	Park Acres Needed to Meet 2020 LOS Goals (Per General Plan)	2030 Population ¹	Park Acres Needed to Meet 2030 LOS Goals
3	9.42	426.76	45,292	135.88	43,735	131.21

Park Locations

COUNTY OWNED PARKS

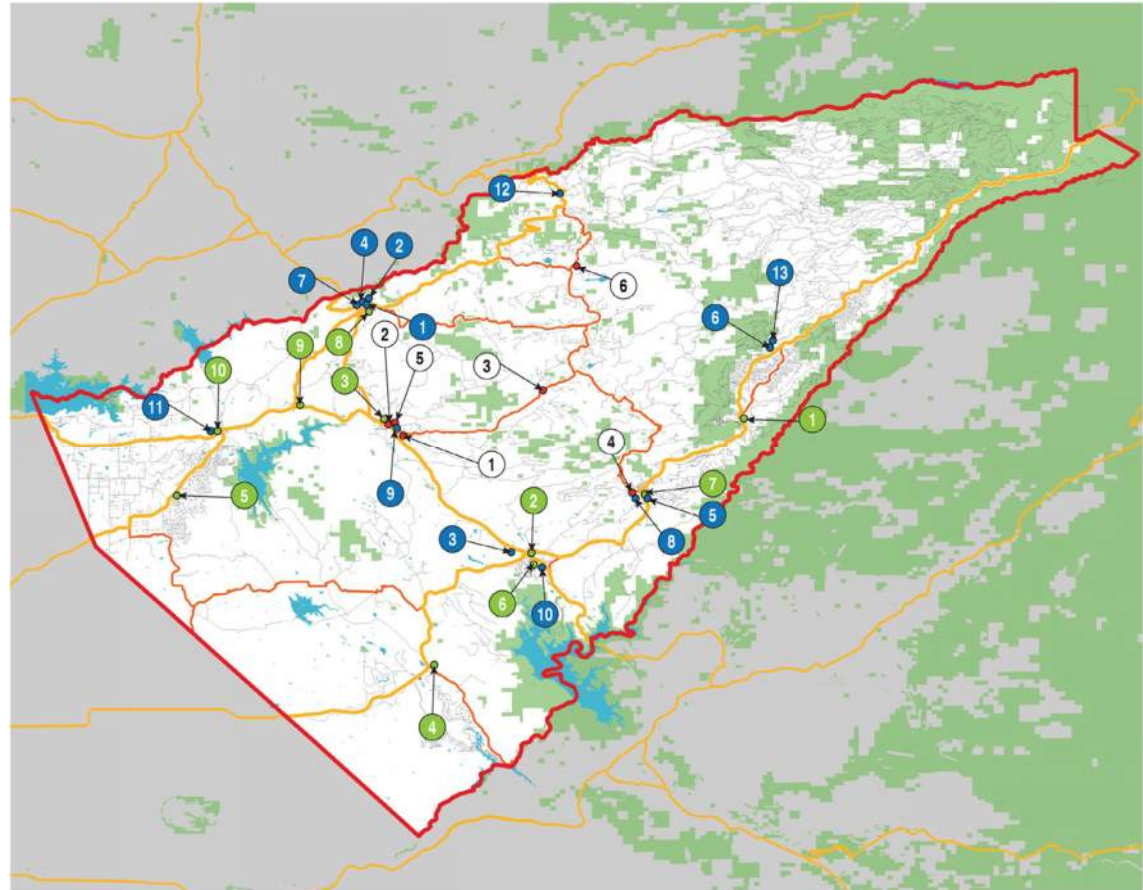
- 1 Alex Quiñones Community Park
- 2 Friedberger Park
- 3 Mountain Ranch Community Park
- 4 Murphys Community Park
- 5 Nielsen Park
- 6 Rail Road Flat - Community Center

SCHOOLS

- 1 Avery Middle School
- 2 Bret Harte High School
- 3 Calaveras High School
- 4 Copperopolis Elementary School
- 5 Jenny Lind Elementary School
- 6 Mark Twain Elementary School
- 7 Michelson Elementary School
- 8 Mokelumne Hill Elementary School
- 9 Toyon Middle School
- 10 Valley Springs Elementary School

NON-COUNTY-OWNED PUBLIC PARKS

- 1 Barry's Tennis Courts
- 2 C.B. Hobbs Park
- 3 Copello Park
- 4 D.K Lawson Horse Arena
- 5 Feeney Park
- 6 Linebaugh Park
- 7 Shutter Tree Park/Marredda Gardens
- 8 Murphy's Public Tennis Courts
- 9 Turner Park
- 10 Utica Park
- 11 Valley Springs Memorial Park
- 12 West Point Town Square
- 13 White Pines Lake Park

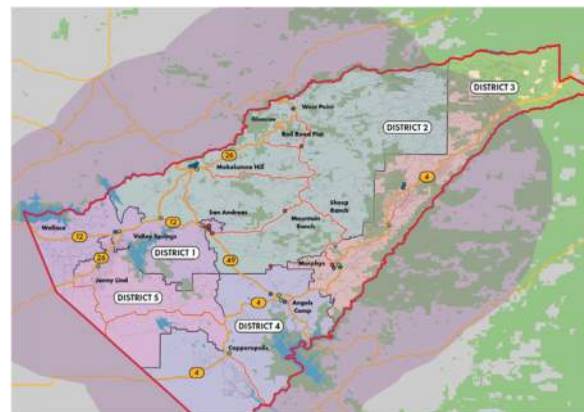
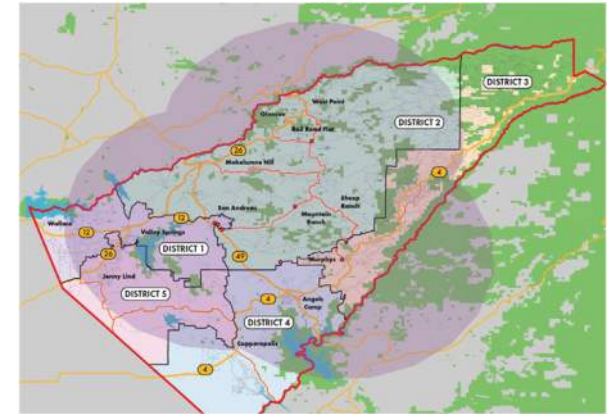
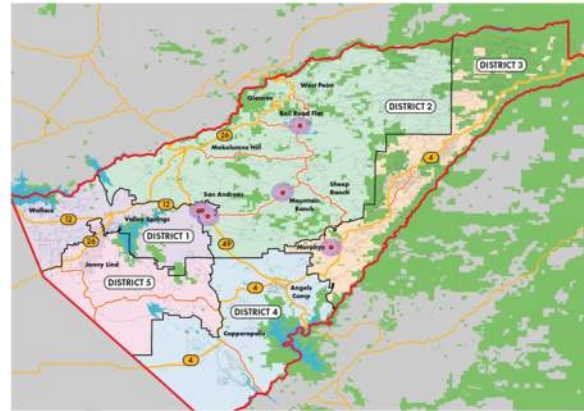


Inventory and Assessment

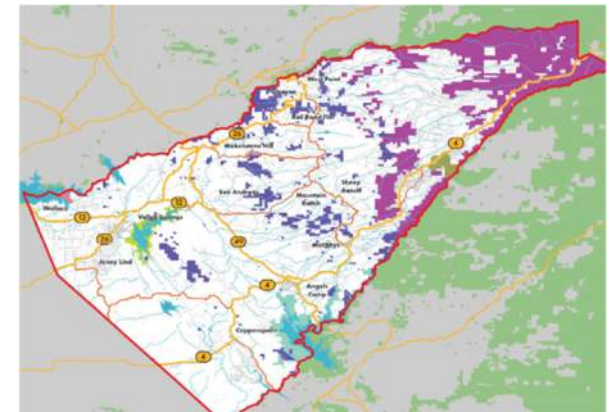
What assets exist?

- Site visits to County and Non-County Parks
- Inventory and Map County Parks
- Map select Non-County Parks
- Review if additional recreation areas managed by govt. agencies

County Parks



Non-County Parks



Recreation Areas- Govt

Inventory and Assessment

What research?

Existing providers

- AMA Youth Sports
- Blue Mountain Community Renewal Council (BMCRC)
- Bret Harte Union High School District
- Calaveras County Water District
- Calaveras Unified School District
- City of Angels Camp
- Ebbetts Pass Veterans Memorial District
- Feeney Park Foundation
- Jenny Lind Veterans Memorial District
- Mark Twain Union Elementary School District
- Mokelumne Hill Veteran District
- Mountain Ranch Community Club
- Murphy's Community Club
- San Andreas Recreation and Park District
- Vallecito Union School District



Valley Springs Memorial Park



Shutter Tree Park

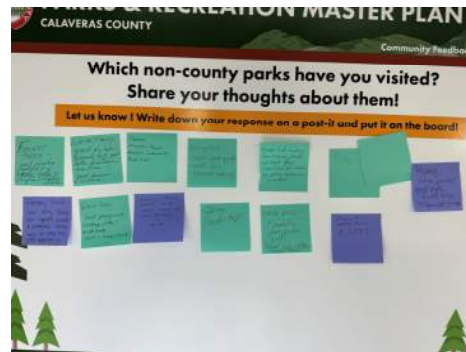


Jenny Lind Memorial Park



Turner Park

Community Outreach



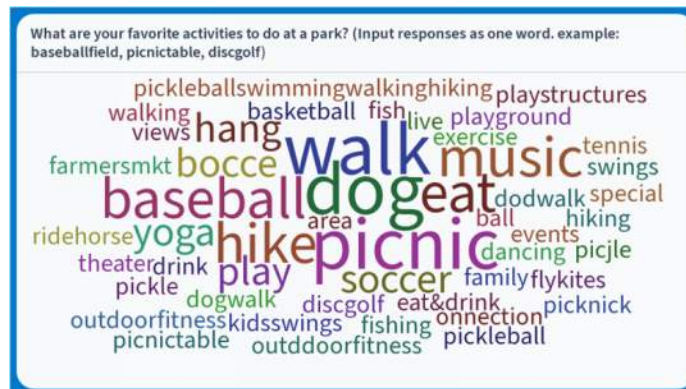
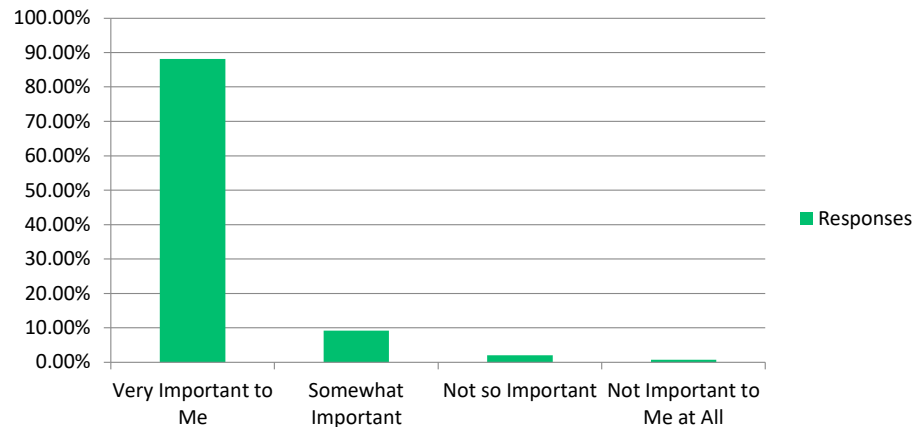
Input Gatherings

- Supervisor Interviews
- Park and Recreation Commission Meeting
- Five Community Group Presentations
- Five Focus Groups meetings

Community Outreach – Survey

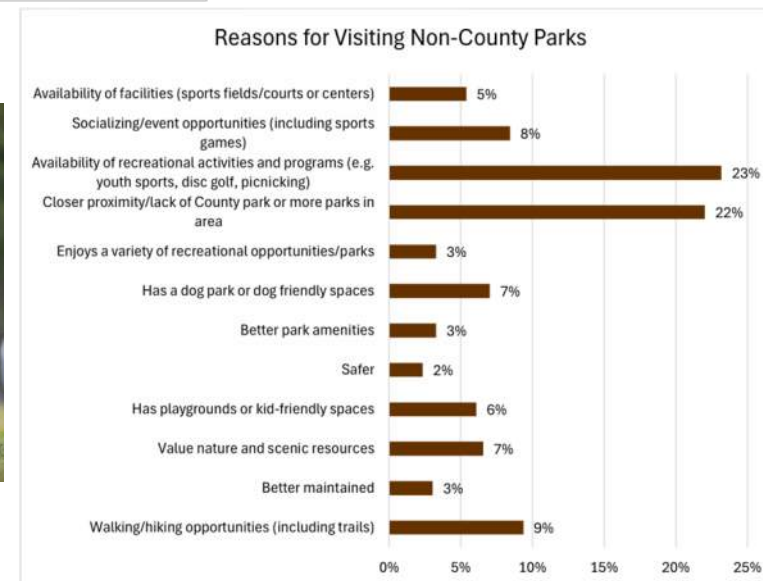
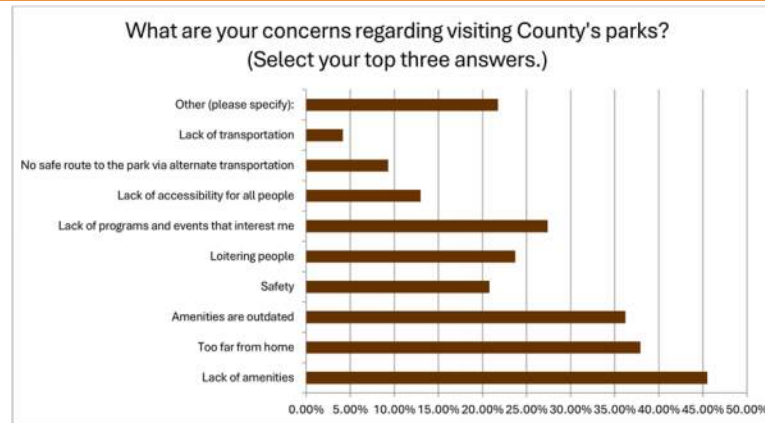
- Goal for a statistically valid survey with 95% confidence for the county population size of 45292 is **381** completed surveys
- 492** were received – meeting this goal!

How important is it for you to have County parks available for public use?



Community Outreach – Survey

- Calaveras County has many parks that were developed by community groups.
- These parks are well-used and provide recreation venues for distinct groups and areas within the County.
- Many of these require maintenance and improvements.
- School properties also provide recreation opportunities for the community.



Needs Assessment - Results

Recreation Opportunity	District 1	District 2	District 3	District 4	District 5	TOTAL
Skateboard/Roller Park	3	3	25	1	4	36
Soccer	3	5	15	4	6	33
Dog Parks	3	2	20	2	5	32
Playgrounds	5	5	14	5	2	31
Pump Track	2	2	18	4	3	29
Outdoor Stage	3	3	16	3	4	29
Hiking Trails	6	6	9	3	4	28
Gathering spaces for Family and Friends	3	4	14	5	2	28
Softball/Baseball	2	1	15	2	6	26
Water Sports - Non-motorized	4	3	11	3	5	26
Basketball	2	2	13	4	3	24
Spaces for Special Events	5	6	9	0	4	24
Mountain Biking Trails	2	6	10	3	2	23
Picnic Areas	2	5	10	4	2	23
Amphitheater	3	4	7	5	3	22
OHV Trails & Areas	1	2	4	5	7	19
Pickleball	4	2	8	4	0	18
Nature/Environmental Education	1	3	7	3	3	17
Tennis	6	1	3	5	0	15
RV/Trailer Campsites	1	2	4	2	4	13
Tent/Car Campsites	2	6	1	1	3	13
Water Sports -Motorized	1	0	7	2	3	13
Bocce Ball	3	3	3	1	2	12
Event Plaza	2	1	2	2	5	12
Disc Golf	2	2	6	0	2	12
Equestrian Trails	0	2	4	1	4	11
Large Group Picnic Area	1	1	2	2	2	8
Flag Football	1	1	3	0	0	5
Gazebo	1	1	1	0	0	3



Interactive Dot Board results

Recommended Facility Needs



Recommendations – County Parks

CALAVERAS COUNTY PARK SCORING

PARK SITE			METRIC #1		METRIC #2		METRIC #3		METRIC #4		METRIC #5		METRIC #6		PARK SCORE	
Typology	Ranking	Park Name	Population Density Per Square Mile	Population Points (10)	Programming	Programming Points (5)	Quantity of Amenities	Weighted Score	Quantity of Amenities Points (10)	Condition of Amenities	Condition of Amenities Points (10)	Revenue Generators	Revenue Generators Points (10)	Connectivity	Connectivity (5)	TOTAL
CP	1	Alex Quiñones Community Park	432	10	5	5	7	2	9	3	8	3	6	0	0	6.3
CP	5	Mountain Ranch Community Park	28	1	5	5	44	10	1	3	8	0	0	0	0	2.5
CP	2	Murphys Community Park	28	1	5	5	47	10	1	2	5	5	10	5	5	3.7
CP	3	Rail Road Flat Community Center	6	1	0	0	4	1	10	4	10	0	0	5	5	3.5
PP	6	Friedberger Park	71	2	0	0	0	0	10	0	0	0	0	5	5	2.0
PP	4	Nielsen Park	432	10	0	0	4	1	10	0	0	0	0	5	5	3.3

1 reflects the highest score = most benefit achieved by improvements

6 reflects the lowest score = least benefit



RAIL ROAD FLAT COMMUNITY CENTER

COMMUNITY PARK 2.5 ACRES

Condition:

- Generally fair condition with some areas in decline
- Access to playground is unclear

Recommendations:

- Review accessible path of travel to play area and update to meet code if required
- Upgrade play areas with inclusive play equipment
- Update sport field/court equipment
- Provide additional seating
- Install lighting to prolong use of park
- Repair cracks in asphalt surfacing
- Provide accessible path of travel from parking lot to park

3



MOUNTAIN RANCH COMMUNITY PARK

COMMUNITY PARK 4.7 ACRES

Condition:

- Generally fair condition with some areas in decline
- Play equipment dated and worn

Recommendations:

- Install lighting to prolong use of park
- Re-stripe parking lot stalls
- Provide accessible path of travel to picnic tables
- Update worn-out play equipment
- Include inclusive site furnishings

5



ALEX QUIÑONES COMMUNITY PARK

COMMUNITY PARK 22.55 ACRES

Condition:

- Generally good condition
- New play area, pickleball and shade sails
- Fields are well maintained

Recommendations:

- Repair cracked parking lot asphalt and re-stripe parking stalls
- Provide paved parking lot at lower fields
- Provide additional seating and tables
- Include inclusive site furnishings

1



NIelsen PARK POCKET PARK

POCKET PARK 0.65 ACRES

Condition:

- Generally good condition
- New picnic tables installed

Recommendations:

- Repair cracks in asphalt and ensure path of travel through park meets ADA requirements
- Re-stripe parking lot stalls. Consider adding ADA stalls
- Consider installing warning/safety signs along the creek

4



MURPHYS COMMUNITY PARK

COMMUNITY PARK 1.09 ACRES

Condition:

- Overall fair condition with some areas in decline
- Park is highly utilized

Recommendations:

- Upgrade play areas with inclusive play equipment and provide an accessible path of travel
- Update and include inclusive site furnishings
- Potential to provide educational opportunities along the creek

2



FRIEDBERGER PARK POCKET PARK

POCKET PARK 0.05 ACRES

Condition:

- Overall good conditions
- No site amenities available

Recommendation:

- Provide seating

6

County Budget

Funding Overview – Key Points

- The County Budget for Parks and Recreation was reviewed.
- Proposition 68 grant funding was used for improvements at Feeney Park, Alex Quinones Community Park, and Rail Road Flat Community Center
- Funds have been allocated by the Board for specific projects.
- Currently, no additional funding allocated to Parks and Recreation and no additional funding is expected.



Financial Action Plan

Financial Action Plan

Explore Funding Sources

- Joint Use Agreements
- Donor Campaigns
- Crowdfunding
- Public-Private Partnerships
- Corporate Sponsorships
- Private Foundations, Gifts and Trust

TABLE 6.3 EXAMPLES OF CORPORATE AND COMMUNITY PARTNERSHIPS³

Joint Use Agreements

Partnerships with other government or nonprofit organizations can be considered to jointly fund park projects. Given that there are several Districts operating and managing parks and recreational facilities in the County, joint use agreements can be explored and implemented to maximize limited resources and promote inter-agency collaboration for community benefit.

Donor Campaigns

Both residents and the business community recognize how park and recreational facilities and programs impact a community's vibrance and quality of life and are often willing to help fund such efforts. Donor campaigns can be used to seek such support whether it pertains to large/high-profile projects of countywide import that require major corporate funding or location specific amenities where community members may be willing to conduct fundraising or donate their time to provide or maintain an amenity in their neighborhood.

Crowdfunding

Crowdfunding is an internet-based resource that allows a large number of people to contribute funds to a specific project or program via an online platform. This funding mechanism represents an opportunity for the County to evaluate on a pilot basis for supporting small projects, although some jurisdictions are evaluating the application of crowdfunding to large infrastructure projects. Examples of crowdfunding aggregators include [Indiegogo](#), [Mightycause](#), and [Infrashares](#) (specific to large scale infrastructure).

Public-Private Partnerships

Public-private partnerships (PPP or P3) involve collaboration between a government entity and a private company to finance, build, and/or operate infrastructure projects. Funding a project in this fashion can facilitate its efficient completion or make it possible in the first place. For parks and recreation, P3s can also involve outsourcing. The [National Recreation and Park Association](#) is a good resource for information on P3 models.

Corporate Sponsorships

Some agencies seek corporate partnerships to sponsor park and recreational programs, events, and facilities. Some examples include art and wine festivals and parades. A common type of sponsorship used to help fund public facilities includes the purchase of naming rights for a defined period such as the life of an asset.

Private Foundations/Gifts/Trusts

Some government entities pursue planned giving strategies to raise funds from tax exempt, nonprofit organizations established with private donations associated specific activities or causes. Private trusts are typically set up with high net-worth individuals who wish to leave a portion of their wealth particular park and recreation amenities, facilities, or programs in a jurisdiction. This potential funding mechanism is interrelated with establishing a park foundation.

Recommendations

Potential Organizational Structures

Short -Term

- Pursue a Partnership with a Park Agency, such as Amador County Recreation Agency (ACRA)
- Development of One or More Park Districts in the County
- Development of a County-wide, Joint Park Agency

Long-Term

- Development of a County Parks and Recreation Manager Position
- Development of a County Parks and Recreation Department

Additional Priorities

- **Strengthen Community Partnerships to Increase Recreational Services**
- **Explore Options to Develop a Regional Sports Facility**
- **Increase Public Awareness of the County support available for Parks**



Implementation Opportunities / Management

Analyze and Assess

- Develop management practices and design guidelines to inform future improvements or expansion.
- Establish maintenance standards for partners.
- Provide recommendations for a prioritized approach to implement parks and recreation improvements.

TABLE 6.4 RECOMMENDED PRIORITIES IMPLEMENTATION TABLE			
OPTION	DESCRIPTION	TIME FRAME	COSTS
Current process with an Economic & Community Development Manager and Parks and Recreation Commission	This option indicates no change to the current parks and recreation process in the County.	Immediate	\$
Join ACRA or Develop Park Districts	This implementation involves the development of one or multiple park districts, based on District area. This may also involve a collaboration with other local established Districts, such as ACRA.	Short-term goal	\$\$
Joint Powers Authority (JPA)	This implementation involves the development of a Joint Powers Authority (JPA), which is a collaboration that may include the County, cities, and school districts.	Long-range goal	\$\$
Parks and Recreation Manager	This implementation involves the placement of an official Parks and Recreation manager in the County, where funding and economic growth allows. This may begin with one existing staff to facilitate and manage Parks and Recreation services.	Long-range goal	\$\$
Full Parks and Recreation Department	This implementation involves the development of a full Parks and Recreation department in the County, where funding and economic growth allows. This involves creating a growing staff of various levels in the department and maintaining the department long-term.	Long-range goal	\$\$\$

Next Steps to Adoption

1. Feedback or Input?

- Provide written comments to the Economic and Community Development Director

2. Make a Recommendation to the Board of Supervisors for Adoption.

A scenic view of a mountain range with a dense forest in the foreground and a clear blue sky. The text "THANK YOU!" is overlaid in the center.

THANK YOU!